



# RETROSPECTIVE 2022



**Since Lex End Homelessness launched in July 2021, our community has made strides in our efforts to end and prevent homelessness for all. As we reflect on one year of Lex End Homelessness, we want to share the progress we have made and our goals for the future.**

**#LexEndHomelessness**



**Unlocking Housing for All**








# RAISE *Awareness*

One of our primary goals for our first year was to spread awareness about LEH's goal and philosophy.

At the center of everything we do is our mission. We believe:

-  In housing. We believe that housing is the solution to ending and preventing homelessness. All of our services, support, and funding are oriented towards achieving this solution.
-  In effectiveness. We evaluate what we do in order to improve, and we stay current on best practices to ensure they are fully implemented.
-  In data. We collect, analyze, and use data to understand opportunities for improvement, monitor our contract compliance, and share the impact of our work.

## HOW TO ADVOCATE & END HOMELESSNESS

### Learn


- **Explore articles** on our website to learn more about what homelessness is and what causes it.
- **Read stories** from individuals and families in our community who have first-hand experience with homelessness.
- **Discover the data.** Use our data dashboard to learn more about our progress towards ending homelessness.
- **Follow Lex End Homelessness** on **Twitter**, **Facebook**, and **Instagram**. We often share resources, volunteer opportunities, and more information about homelessness.

### Advocate

- **Join the Lex End Homelessness Continuum of Care (CoC).** Partnership is free and highly encouraged for any organization working in the field of human services. Apply today!
- **Call a Lex End Homelessness provider, organization** and ask to learn more about their work and volunteer opportunities.
- **Contact local leaders** about increasing the investment in affordable and fair housing in our community. Read our **thought-provoking articles** to find talking points and insights to share.
- **Reach out to landlords** to provide rental opportunities for people with past criminal records, poor credit or poor rental histories. The inability to find rental housing can often lead to homelessness. Check out the **Lexington Fair Housing Council** to learn more.
- **Advocate to local employers** to consider qualifications and expertise before rejecting someone because of previous mistakes. Some people can't find work because employers reject their job applications based strictly on long past criminal incidents. There are **many programs** that will support employers who are willing to provide second chance employment.
- **Follow other advocacy organizations** like the Homeless & Housing Coalition of Kentucky (HHCK) for more advocacy opportunities.

### Give

- **Support permanent housing** for all by donating to Lex End Homelessness Fund. No donation is too small to make a difference.
- **Find a partner organization** that works directly on ending and reducing homelessness and support them by donating items and supplies they need. You can also volunteer with an organization to make and share meals.
- **Give resource cards** and other tangible items (such as single ride bus passes) to those asking for help.

#LexEndHomelessness LEH  Unlocking Hou



## Real Life Stories & Articles About Homelessness

At Lex End Homelessness (LEH), we believe that ending homelessness begins with listening and should be data driven. To help increase understanding of homelessness, we're writing evidence-based articles and collaborating with partners and community members to collect "Lived Experience" stories.

The LEH "Lived Experience" stories project is an opportunity to share personal accounts of what it is like to experience homelessness in our community. The hope is that these interview-style stories will empower and inspire all of us in the Lexington community to learn more and join the Lex End Homelessness movement.

ANNUAL DATA

QUARTERLY DATA

System Level

Street Outreach

Emergency Shelter

Transitional Housing

Rapid Re-Housing

Perm. Supportive Housing

Program Type (match w/ current tab)

System Level

Year

FY 2021

Source

System Level

System Exit Destinations

Permanent

482

Temporary

896

Institutional

81

Other

930

System Length of Time Homeless

Emergency Shelter

Emergency Shelter & Transitional Housing

Average

49

Average

56

Median

13

Median

14

System Length of Time Homeless, Prior to Move-In

Emergency Shelter & Permanent Supportive Housing

Emergency Shelter/Transitional Housing & Permanent Supportive Housing

Average

369

Average

378

Median

59

Median

65

System Returns to Homelessness

Street Outreach

Transitional Housing

6-12 Months

2%

6-12 Months

1%

13-24 Months

2%

13-24 Months

4%

2+ Years

8%

2+ Years

13%

Emergency Shelter

Rapid Re-Housing & Permanent Supportive Housing

6-12 Months

34%

6-12 Months

9%

13-24 Months

23%

13-24 Months

5%

2+ Years

113%

2+ Years

23%

System

6-12 Months

46%

13-24 Months

34%

Total Served

3,065

First Time Homeless

1,718

Because LEH also believes that ending homelessness begins by understanding it, we took a multifaceted approach to sharing information about homelessness' causes and solutions.

This past year, we launched the Community Voices project to share stories from people who have experienced or are personally connected to homelessness.

Between our **interactive data dashboard** and **19 original articles and stories**, we continue to share research-backed, innovative, and engaging information about the need for initiatives like ours.



### Messner Home Story

At the end of July, the Messner Home in Lexington suddenly closed, leaving 24 men who had been living there in need of housing. New Beginnings & New Vista were key Lex End Homelessness partners in getting 100% of the affected individuals rehoused.

[READ MORE](#)



### Patty's Story: I Know What It's Like To Be Hungry and Cold

Patty's story is one of triumph, and Lex End Homelessness is committed to supporting clients and partners in our mission to end homelessness in Lexington.

[READ MORE](#)



### Introducing Marissa Webb

Marissa Webb joined the Lexington-Fayette Urban County Government's Office of Homelessness Prevention and Intervention (OHPI) as the Continuum of Care (CoC) Coordinator in April of 2022. Since taking on this role, she's brought her skills, experience, and passion into her work with the CoC and larger Lexington community.

[READ MORE](#)



### What is Homelessness?

Ending homelessness begins by understanding what it is. It isn't a disease or an affliction, it is an inability to pay rent or make the mortgage due to a lack of structural support.

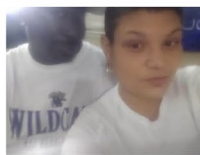
[READ MORE](#)



### CoC Impacts

The LEH Continuum of Care is a community-wide initiative to offer a wide range of services to folks in need of stable housing and attention.

[READ MORE](#)



### Shawntay and Unique's Story: "We've Been Looking for Y'all"

Homelessness is a traumatic experience. Shawntay is a man of few words, but this quality gives his stories conviction. "Experiencing homelessness was terrible. It was a nightmare, and I hate to have to see anyone else go through what I did," he said.





# **GROW THE** *Continuum of Care*

LEH is fueled by the strength of dozens of nonprofit organizations, partners, and advocacy groups that together make up our community's Continuum of Care (or CoC). The Lex End Homelessness CoC is the comprehensive network of partners and leaders in our community that work together to coordinate the policies, strategies, and actions that end and prevent homelessness. Over the last year, we have connected with more organizations and community leaders than ever before.

**As of September 2022, we now have 54 members bringing their passion and diverse service expertise to our Continuum of Care.**

These members also help us in maintaining our coordinated entry system, which ensures that everyone who needs services receives the appropriate support.







# INVEST IN *Community Housing Projects*

Since 2015, the Lexington-Fayette Urban County Government's Office of Homelessness Prevention and Intervention (OHPI) has received **an over 35% increase in federal funding, with over 100% of requested funds awarded in both 2018 and 2020.**

This money directly supports projects that seek to end and prevent homelessness in our community, and with local, state, and federal support, OHPI has developed 50 new programs that support our cause.





In just 2021, the Lexington-Fayette CoC was awarded **over \$2 million** by the Department of Housing and Urban Development (HUD).

Among others, the Mountain Comprehensive Care Center, New Beginnings, and the Community Action Council were each awarded funds to support re-housing projects in our community.

We also launched a new donation program, where every dollar donated is reinvested into housing projects across Lexington.







# CONNECT WITH *Our Community*

Finally, at LEH, we know that ending homelessness is a community effort.

Between our **new website, social media accounts, and community advertisements**, one of our goals was to connect with people and organizations in Lexington and beyond.

Whether you have seen one of the LEH ads on public transportation or a post from us on Twitter, we've spent the past year growing our network and connecting with people like you.





That doesn't mean that the last year has been easy. The Covid-19 pandemic has posed new housing challenges for both people and service providers in our community.

Given new and unpredictable circumstances, our updated **five-year strategic plan** has 55 recommendations and actions that we can take to further respond to homelessness.







**Our overarching goals are: extend community outreach and engagement, further prevent homelessness, focus on policy and advocacy, increase funding sources, and expand permanent supportive housing options.**

**We are confident that these goals will be possible with our partner and community support.**

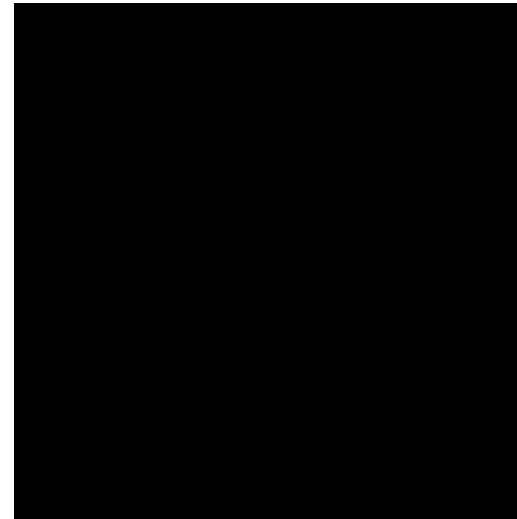






**As we reflect on our year, we also want to share news of our staffing changes. We bid goodbye to Polly Ruddick, who had served as OHPI's Director since 2017. We are very appreciative of all the hard work that Polly has done for Lex End Homelessness and LFUCG.**

**With that, we are excited to announce that just this month, Jeff Herron has joined us as the new Director of the OHPI. We are also excited to share that Marissa Webb joined LFUCG as the Continuum of Care Coordinator in April of this year.**



**Jeff Herron**



**Marissa Webb**



**Together with the CoC and our Lexington  
community, we look forward to another  
year of Lex End Homelessness.**

**#LexEndHomelessness**



**Unlocking Housing for All**